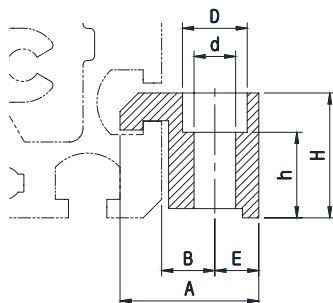
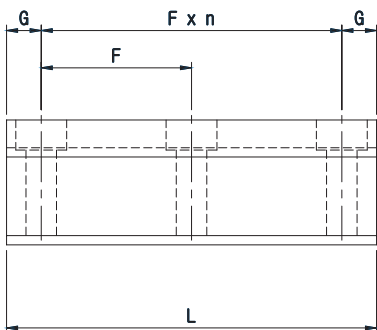
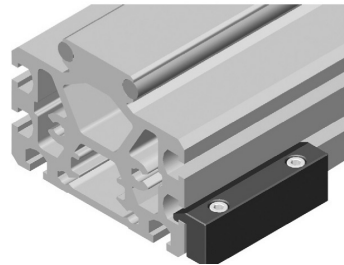
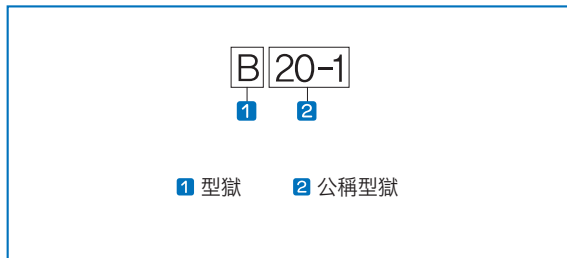


B型 支架

公稱型獄的構成



單位 : mm

公稱型獄	A	B	H	L	d×D	h	E	F×n	G
B 20-1	20	7	23.5	40	6.6×11	17	7.5	25 ×1	7.5
B 20-2				65				25 ×2	
B 25-1	28	10	27	47.5	6.6×11	20.5	9	32.5×1	7.5
B 25-2				80				32.5×2	
B 52-1	30	11.5	27	70	9 ×14	18.5	9.5	55 ×1	7.5
B 52-2				125				55 ×2	

支架組裝攻矩

公稱型獄	M5	M6	M8
Max(N·m)	5.8	9.9	24

1N·m ≒ 0.102kgf·m